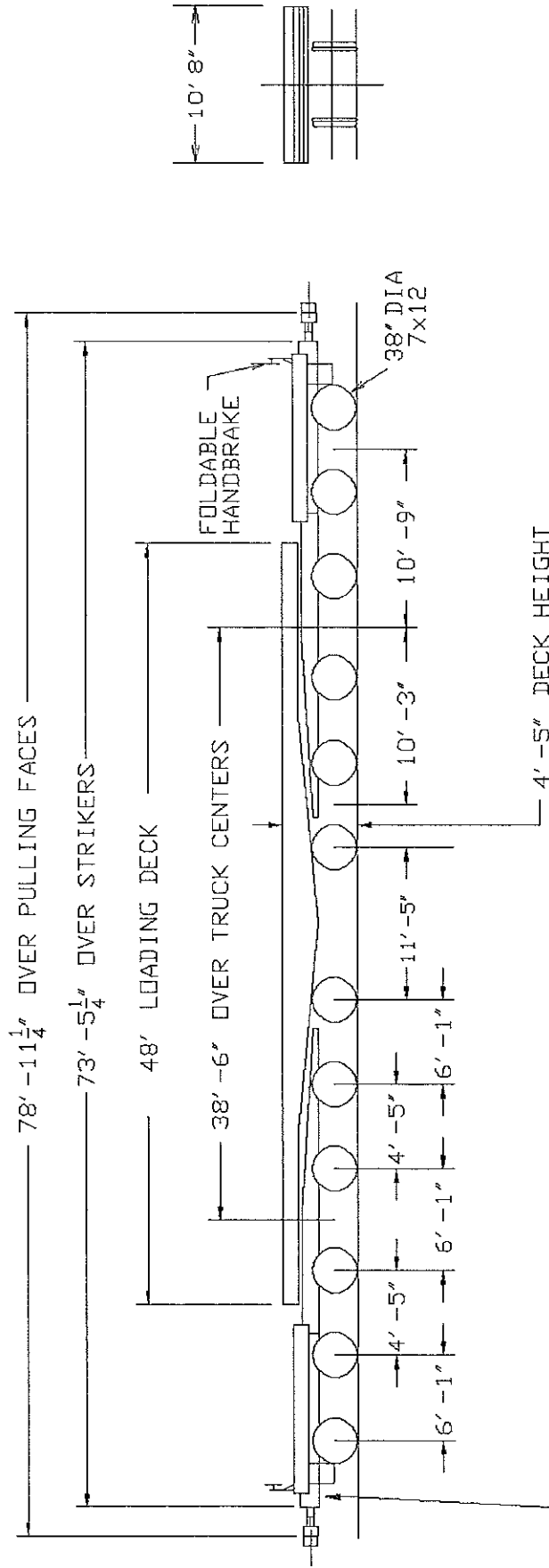


4'-5" DECK HEIGHT ABOVE RAIL IS MEASURED AT CENTER OF CARBODY, INCLUDING CAMBER, WITH A LOAD EQUAL TO 50% OF LOAD LIMIT UNIFORMLY DISTRIBUTED OVER FULL LENGTH OF LOAD DECK.



15' E. O. C. HAS 'BLOCK-OUT' CAPABILITY (BOTH ENDS) FOR BOLSTER LOADS

CAR NUMBER	LOAD LIMIT LBS	LIGHT WEIGHT LBS
131140	744,000	201,000

CAR NUMBERS QTTX 131140



TTX COMPANY  
CHICAGO, ILLINOIS

CAR WILL CARRY A CONCENTRATED LOAD AT THE CENTER OF THE CAR EQUAL TO THE LOAD LIMIT

370 TON, 48 FOOT DECK  
FLAT CAR

-CENTER OF GRAVITY - EMPTY = 32" ATR  
-CLEARANCE PROFILE WITHIN AAR PLATE 'B'

CLASS KSH48	DATE 06-19-09	REV C	12152
----------------	------------------	----------	-------