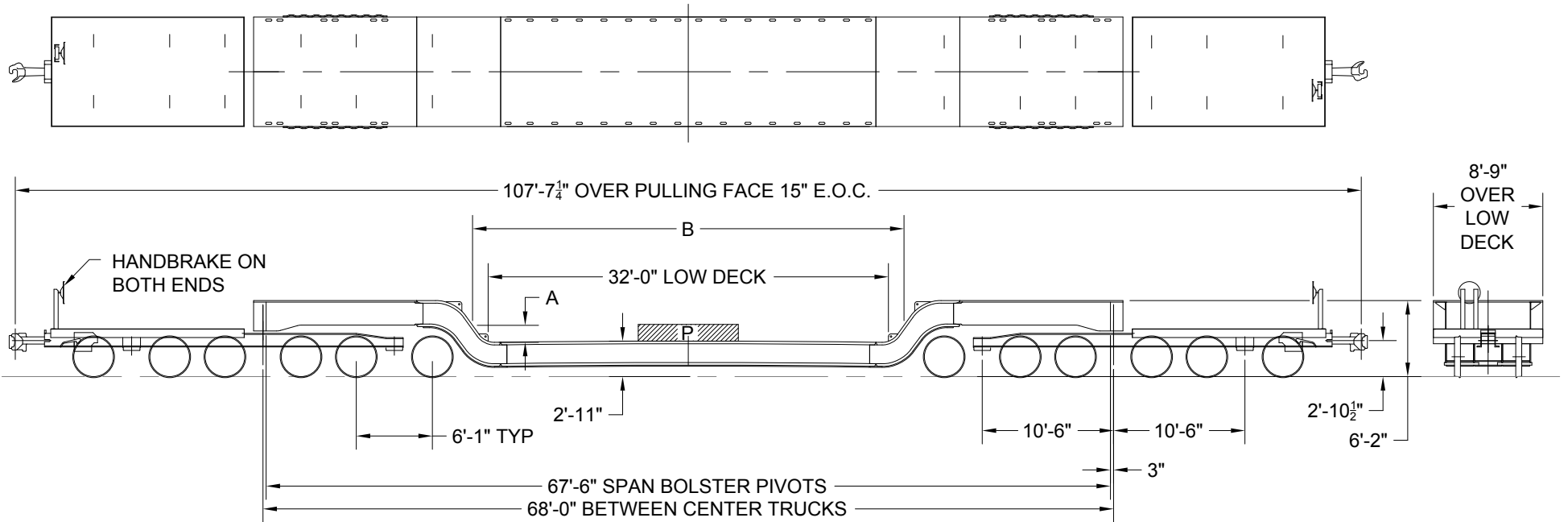


2'-11" DECK HEIGHT ABOVE RAIL IS MEASURED AT CENTER OF CARBODY, INCLUDING CAMBER, WITH A LOAD EQUAL TO 50% OF LOAD LIMIT UNIFORMLY DISTRIBUTED OVER FULL LENGTH OF LOAD DECK.



MAXIMUM WEIGHT OF PARTIAL LENGTH LOADS

LOAD LENGTH (FT) (b)	LOAD (1000) (LBS) (P)
0	445.2*
4	282.0
8	520.2
12	564.8
16	618.0
18 & OVER	LOAD LIMIT

\* MAX. CONCENTRATED LOAD

BOTTOM OF LOAD ABOVE DECK A	MAX. LENGTH OF LOAD B
12"	33'-11"
18"	34'-8"
24"	35'-5"

CAR NUMBERS QTTX 130650-130655

CENTER OF GRAVITY - EMPTY = 30.2" ATR  
CLEARANCE PROFILE WITHIN AAR PLATE "C"

CAR SERIES	LOAD LIMIT LBS.	LIGHT WEIGHT LBS.
130650-130655	665,000	280,000

**TTX** TTX COMPANY  
CHICAGO, ILLINOIS

330 TON, 32 FOOT DECK  
DEPRESSED CENTER FLAT CAR

CLASS KDH32A	DATE 06-01-02	REV F	11626
-----------------	------------------	----------	-------