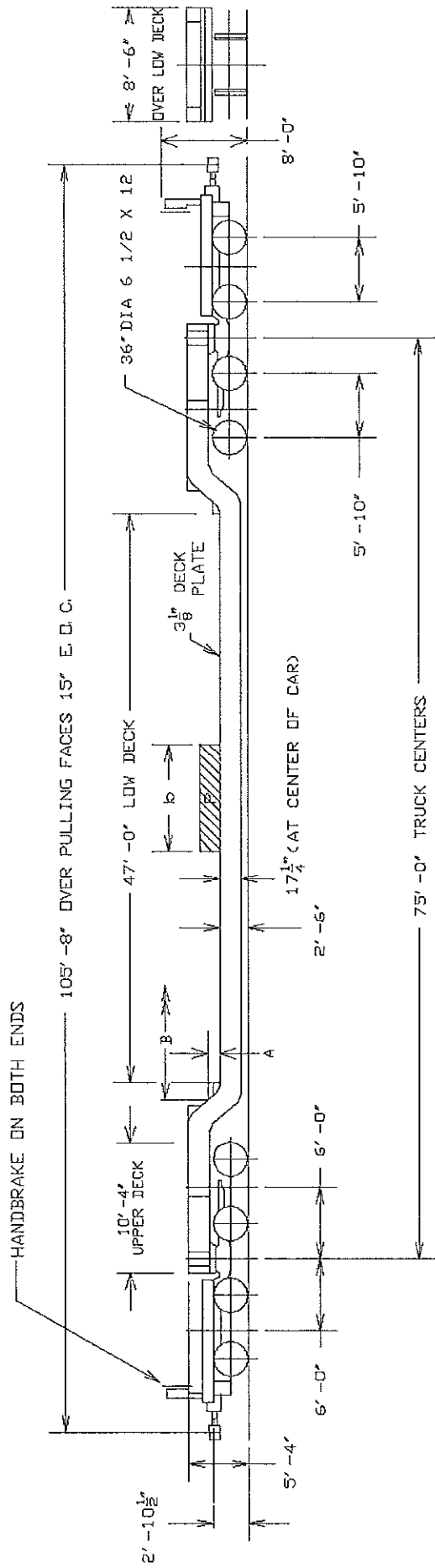


2'-6" DECK HEIGHT ABOVE RAIL IS MEASURED AT CENTER OF CARBODY, INCLUDING CAMBER, INCLUDING CAMBER, WITH A LOAD EQUAL TO 50% OF LOAD LIMIT UNIFORMLY DISTRIBUTED OVER FULL LENGTH OF DEPRESSED DECK.



BOTTOM OF LOAD ABOVE DECK A	MAX. LENGTH OF LOAD B
12"	49'-0"
18"	49'-8"
24"	50'-4"

CAR NUMBER	LOAD LIMIT LBS	LIGHT WEIGHT LBS
130502	343,600	228,400
130503	345,400	226,600
AVERAGE	344,500	227,500

CAR NUMBERS QTTX 130502-130503



TTX COMPANY
CHICAGO, ILLINOIS

CAR WILL CARRY A CONCENTRATED LOAD AT THE CENTER OF THE CAR EQUAL TO THE LOAD LIMIT

-CENTER OF GRAVITY - EMPTY = 27.5" ATR
-CLEARANCE PROFILE EXCEEDS PLATE "C-1" BY 7" AT UNDERSIDE OF 3" TOP DECK PLATE

170 TON, 47 FOOT DECK
DEPRESSED CENTER FLAT CAR

CLASS DDH47	DATE 06-19-09	REV C	9920
----------------	------------------	----------	------