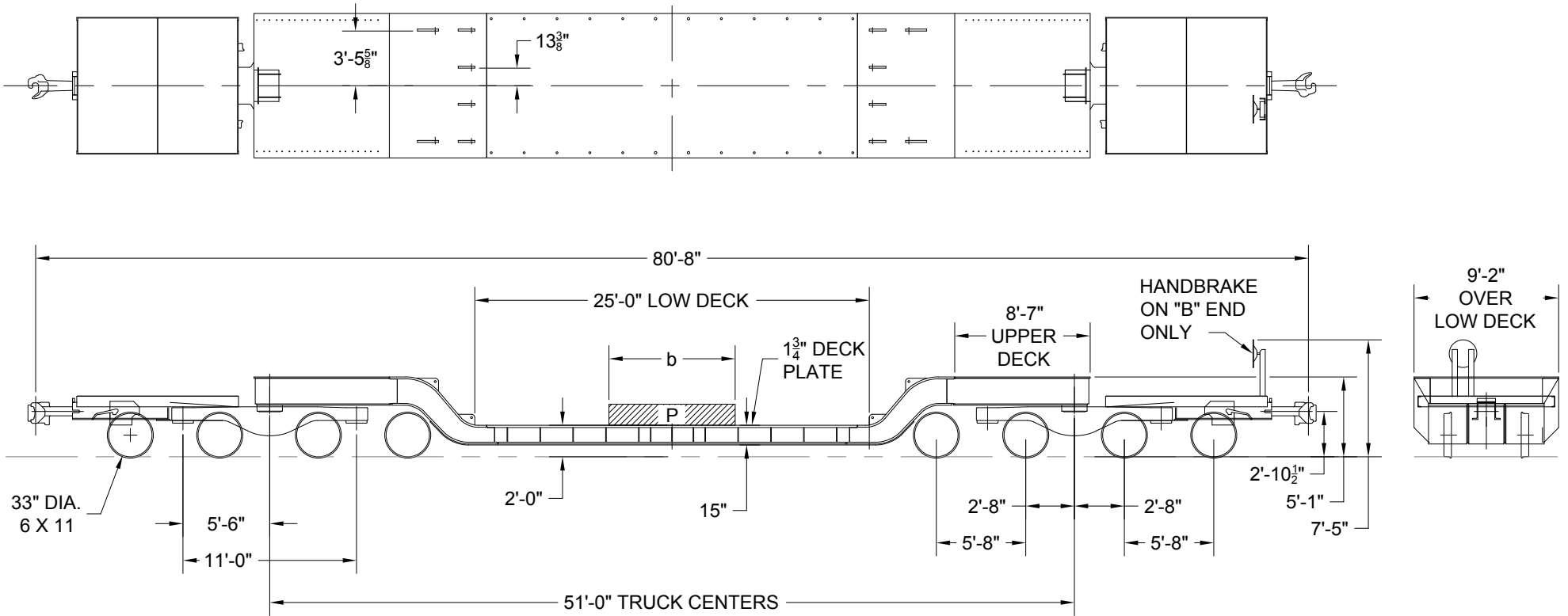


2'-0" DECK HEIGHT ABOVE RAIL IS MEASURED AT CENTER OF CARBODY, INCLUDING CAMBER, WITH A LOAD EQUAL TO 50% OF LOAD LIMIT UNIFORMLY DISTRIBUTED OVER FULL LENGTH OF LOAD DECK.



MAXIMUM WEIGHT OF PARTIAL LENGTH LOADS	
LOAD LENGTH (FT) (b)	LOAD (1000) (LBS) (P)
2	260.8
4	266.2
6	271.7
8	277.5
10	283.5
12	289.8
14	296.4
16 & OVER	LOAD LIMIT

CAR NUMBER	LOAD LIMIT LBS.	LIGHT WEIGHT LBS.
130962	307,300	132,700
130963	307,000	133,700
130964	309,700	130,300
130966	308,000	132,000
AVERAGE	308,300	131,700

CAR NUMBERS QTTX 130962-130964
 CAR NUMBER QTTX 130966

CENTER OF GRAVITY - EMPTY = 26" ATR
 CLEARANCE PROFILE WITHIN AAR PLATE "C"

TTX		TTX COMPANY CHICAGO, ILLINOIS	
150 TON, 25 FOOT DECK DEPRESSED CENTER FLAT CAR			
CLASS MDH25	DATE 04-04-01	REV D	12148